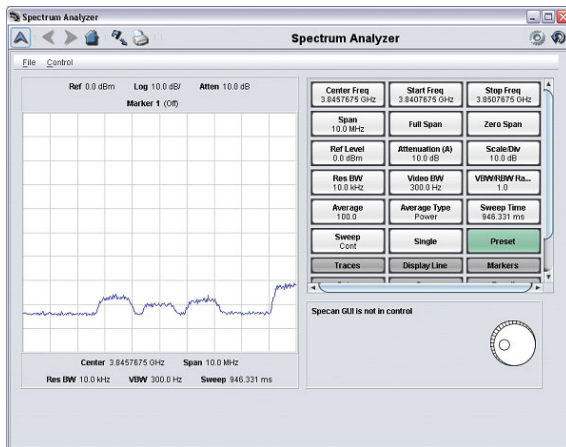


Compass Spectrum Analyzer Interface (SA-I)

Overview

The Spectrum Analyzer is a complex, but powerful tool employed by most organizations using satellite communications. This critical tool ensures transmitted data is within the end user's acceptable service thresholds. For this reason, it is important to incorporate this equipment into the monitor and control capabilities of the customer's network management system. Newpoint's Compass system provides an optional Spectrum Analyzer Interface (SA-I) that is fully integrated with Newpoint Compass TrueNorth's Graphical User Interface (GUI). This allows operators to perform crucial spectrum analysis from anywhere in the network without being next to the physical device.

Detail Description



Two elements comprise Newpoint's SA-I: a communications interface to the physical device and a GUI plug-in to display equipment statistics. SA-I leverages the Compass suite's powerful device management features to communicate to the equipment serially or via Ethernet based

upon the manufacturer's protocol. SA-I is primarily polling the device's trace display as well as configuration settings. Once these are received and the raw data is processed, the data is displayed to the user through the TrueNorth SA-I plug-in. Beyond viewing the spectrum trace and configuration, the user can also configure the physical device with simple commands right from the TrueNorth GUI. The display was designed to mimic the control panel of most spectrum analyzers, including buttons and knobs to minimize training allowing most operators to use the product with virtually no learning curve.

In Conclusion

Maximize your spectrum analyzer investment by using it to troubleshoot system problems or verify network performance no matter where you are located using the Compass Spectrum Analyzer Interface. You are no longer physically tied to the analyzer; the TrueNorth GUI allows complete control of the analyzer from wherever you are on the network.

Features

- ◆ Monitor and control of local or remote spectrum analyzers
- ◆ Graphical User Interface mimics the Equipment Front Panel
- ◆ Allows an operator to take control of the analyzer, preventing two operators from trying to control it at the same time
- ◆ Compatible with any spectrum analyzer provided with a serial or Ethernet interface

Benefits

- ◆ Quickly access the spectrum analyzer at anytime from anywhere on the network to troubleshoot system anomalies
- ◆ Capture and store critical spectral data you can provide to satellite operators or service providers to assist in troubleshooting your link
- ◆ Eliminate travel to transmission shelters to configure and monitor spectrums
- ◆ Little to no training required for operators accustomed to manual operation of spectrum analyzers
- ◆ If the spectrum analyzer serial interface is not already supported, Newpoint will establish the interface at no additional cost with the purchase of a license