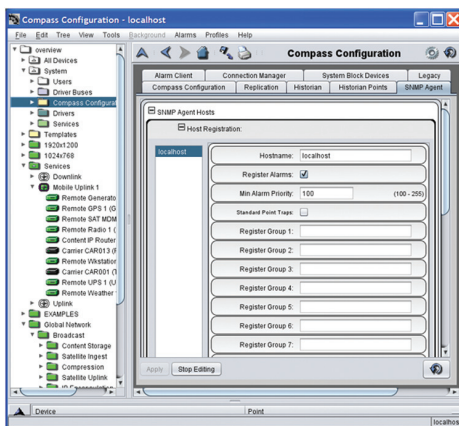


COMPASS SNMP Agent

Overview

The Simple Network Management Protocol (SNMP) has become the standard and preferred method for primary business operations applications to obtain network statistics and health information from most Network Management Systems (NMS). However, end users are faced with two major problems – 1) legacy equipment and subnets that exist without SNMP support and 2) many elements unnecessarily flooding networks with unfiltered SNMP data. Newpoint Technologies' COMPASS SNMP Agent is the perfect solution for both problems. Since 1995, COMPASS has supported legacy communication interfaces such as serial or electrical GPIO as well as other proprietary equipment interfaces and buses, and currently has a library of more than 1,500 device drivers. Newpoint also provides most new drivers free of charge. In addition, COMPASS can also interface with SNMP-based equipment. Regardless of what protocol or interface is available with the equipment, once the data is in COMPASS other applications can use the COMPASS SNMP Agent to view status and alarm information and even send commands. The agent also offers a layer of security by giving the user full control over the data elements made available to other applications.



Host Registration with High Level Filtering

The COMPASS SNMP Agent becomes even more powerful when leveraging COMPASS's strength in remote site management. When the agent is combined with the COMPASS-based "Mercury" unit, the result is an intelligent SNMP proxy agent for remote site management. Data filtering logic rules efficiently use communication pipes to remote sites by only emitting data of

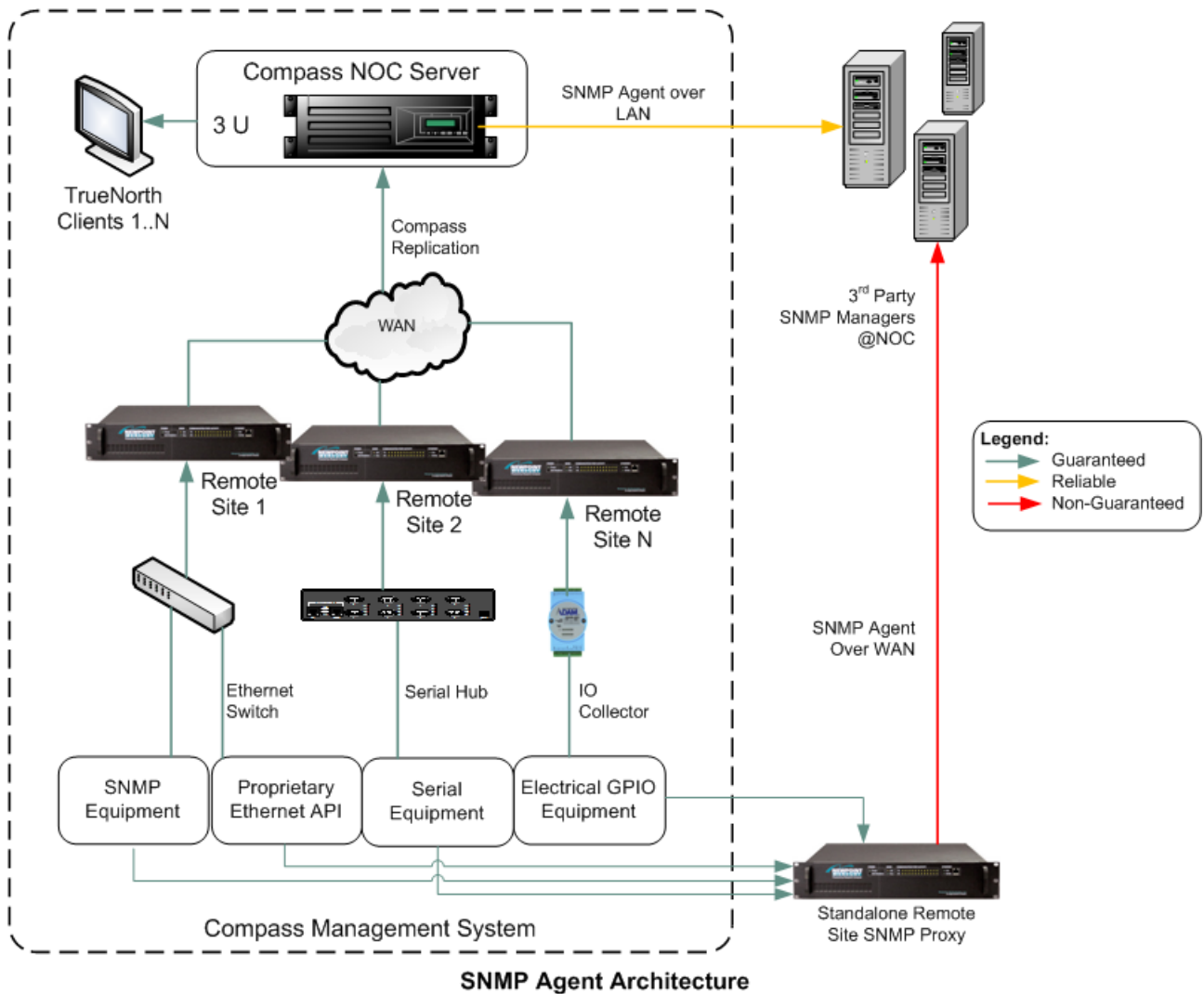
interest to the end user and even then, only after a change. In addition, SNMP data is quite reliable within a facility or LAN, but its UDP-based communications can quickly become unreliable between multiple facilities or on a WAN. COMPASS's powerful replication features can store data during a connection failure and resend the data when links have been reestablished, guaranteeing no data loss.

Features

- ◆ Compatible with any third-party SNMP Manager
- ◆ SNMP V1, V2 and V3 support including GET, SET, TRAPS, GET NEXT, GET BULK
- ◆ Seamlessly integrated with COMPASS and TrueNorth
- ◆ Graphically configure data available via the SNMP Agent to other applications
- ◆ Easily establish rules for alarm and statistics filtering when forwarding data

Benefits

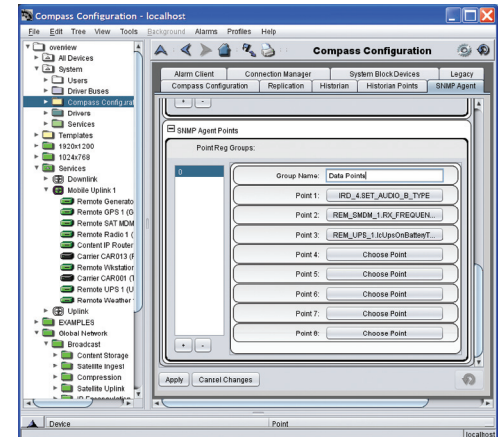
- ◆ Reduces the cost of integrating the COMPASS NMS with other applications running on the network
- ◆ Maximizes network bandwidth by allowing users to retrieve data efficiently based upon their network
- ◆ Reduces cost of integrating proprietary serial, Ethernet or GPIO equipment into SNMP-centric applications
- ◆ Configure the agent from TrueNorth management GUI and leverage COMPASS's scripting and logic functions to make a smarter agent to transmit calculated values instead of raw data
- ◆ Eliminate flooding business network with data from equipment rooms as well as efficiently monitor remote facilities



Detail Description

SNMP Agent is a COMPASS option providing capabilities to convert COMPASS or Mercury real-time data to SNMP format for access by an SNMP manager. COMPASS keeps a real-time image of all device states that enables instant results when queried by third-party managers. In addition, alarms and events can be configured to transmit unsolicited to interested parties. The end user is provided with COMPASS SNMP MiBs and documentation detailing how equipment and relevant data are accessible via the SNMP Agent.

After configuring interested third-party SNMP managers, a user can define data filtering rules to send only data the SNMP manager is interested in or should be permitted to access. These rules can be high level, such as all alarms above a certain priority, or register for just specific status points in the system or status for one or more managed devices. These rules are managed by groups that make maintaining logic much simpler.



Low Level Filter by Device and Point

In Conclusion

The COMPASS SNMP Agent maximizes the benefits received from your network management system by enabling the sharing of information gathered from network elements with other applications and business system, and by acting as a bridge from legacy systems to their contemporaries without having to be an SNMP expert!